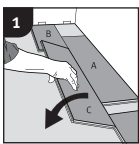




Important information

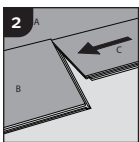
- The flooring must be acclimated a minimum of 24 to 48 hours prior to installation in the room where the installation will take place
- In larger rooms the flooring must be installed in smaller sections with expansion joints.
- The distance to walls and other permanent pieces of construction elements (such as pillars and kitchen islands) should be approximately 5 mm
- Never install very heavy pieces of furniture such as kitchen islands/cabinets on top of the flooring
- The indoor climate should have a temperature between 15-23 °C and relative air humidity between 30-60%.
- Always follow the floor manufacturers requirements and specifications regarding subfloor preparation.

General installation instructions



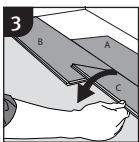
First row

Place panel (A) as support for long side alignment of panel (B) and (C) while you install panel (B) and panel (C). After that the complete first row is installed, remove panel (A).

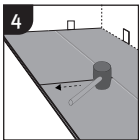


Second panel, first row

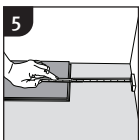
Place this panel (C) gently close to the short end of the first one (B).



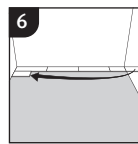
Fold the panel down in a single movement. During the fold down, make sure the panels are close to each other.



Afterwards use a rubber hammer along the short end just installed.

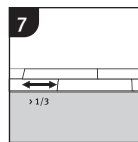


At the end of the first row, put a spacer to the wall and measure the length of the last panel to fit.

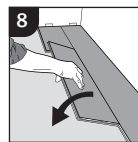


Second row, first plank.

Start with the rest of the cut plank from the first row.

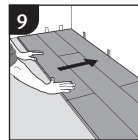


Staggered joint distance i.e. minimum distance between short ends of planks in parallel rows shall not be less than the given length.



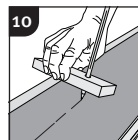
Second row, second plank

Place the panel gently and close to the short end of the previous panel and fold it down in a single action movement.



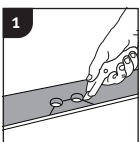
After 2-3 rows

Adjust the distance to the front wall by placing spacers.



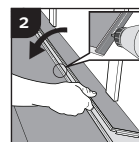
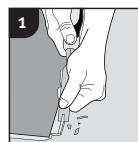
The first and last row may need to be adjusted at an uneven wall. Copy the wall line to the first or last plank row with the shown tool, disassemble planks, adjust and reinstall.

Installation around radiator/heating pipes



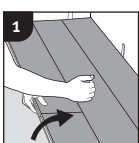
Drill holes two times larger than the diameter of the pipes. Remove a piece of the panel with a utility knife. Put the panel on one side of the pipes and the removed piece on the other side.

When angling is not possible



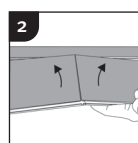
Remove the vertical locking part of the strip with a chisel, put applicable glue on the strip and push the panels horizontally together. Place some spacers between last board and the wall.

Dismantling panels



Separate the whole row by carefully lifting up and release the whole row.

Fold up the row and release the whole long side.



Disassemble the panels by lifting the short ends upwards. *Never fold up a panel, as this damages the profile.*